

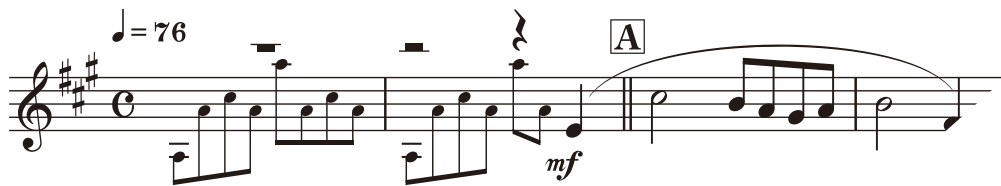
北の国から —遙かなる大地より—

さだまさし 作曲

The image displays a musical score for the piece "北の国から" (From the Northern Land). The score is written in treble clef with a key signature of one flat (B-flat) and a common time signature (C). The tempo is marked as ♩ = 76. The score includes several measures of music, with dynamic markings such as *mf* (mezzo-forte) and *f* (forte). There are also performance instructions like *dim.* (diminuendo) and *rit.* (ritardando). The score is overlaid with a large, diagonal watermark that reads "SAMPLE".

北の国から —遙かなる大地より—

さだまさし 作



SAMPLE

